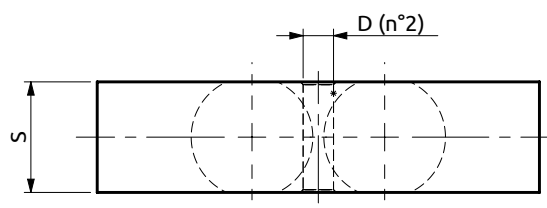
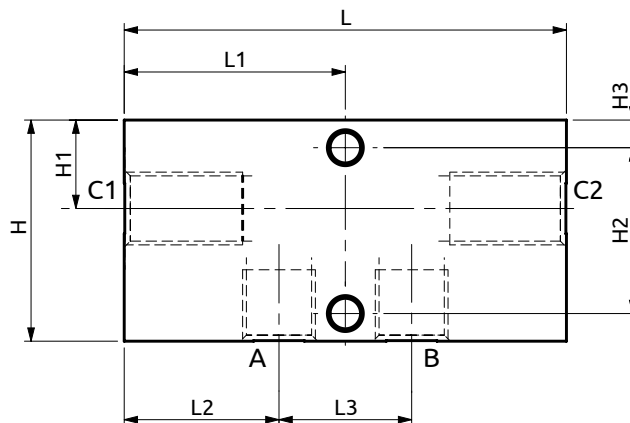
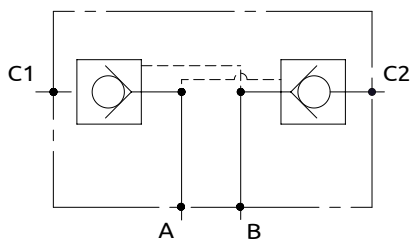
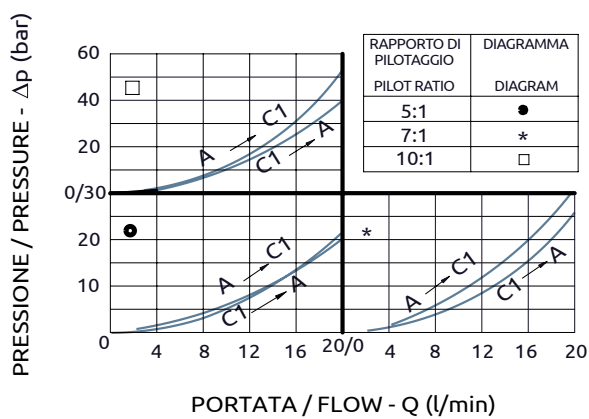




## Valvola di blocco doppia pilotata Dual pilot operated check valve



CURVE CARATTERISTICHE  
PERFORMANCE CURVES



Corpo in acciaio / Steel body

80	40	28	24	20	40	16	30	5	Ø5.5
L	L1	L2	L3	S	H	H1	H2	H3	D



DESCRIZIONE

Permette il flusso libero da A verso C1 e da B verso C2, mentre nelle direzioni inverse il flusso è pilotato. Idonea al sostentamento di un carico, non al controllo discesa.

DESCRIPTION

The valve allows free flow from A to C1 and from B to C2, whereas in the opposite directions the flow is piloted. Suitable to hold a load not to control a load lowering.

Codice Ordinazione	Rapporto di Pilotaggio	Portata Massima	Pressione Max	Dimensione Porte	Peso
Ordering Code	Pilot Ratio	Max Flow	Max Pressure	Port Size	Weight
A050253.01.00	5:1	20 l/min	350 bar	1/4"G	0.45 kg
A050253.02.00	7:1	20 l/min	350 bar	1/4"G	0.45 kg
A050253.03.00	10:1	20 l/min	350 bar	1/4"G	0.45 kg