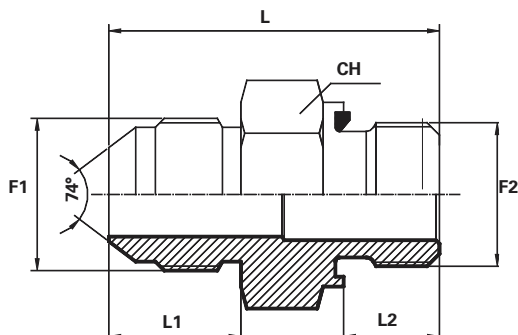


Adattatore diritto Maschio JIC Maschio Gas cilindrico forma E DIN 3852 (1)

Adaptor male JIC - male BSPP form E
Adaptateur mâle JIC - mâle BSPP forme E
Adapter AG-JIC / AG-zöllig form E
Adaptador macho JIC - macho BSPP forma E

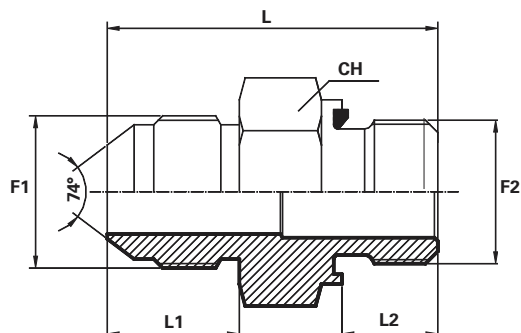


F1 - JIC
F2 - BSPP, Gas cylindrique, Zylinder - Gasgewindr,
Gas cilindrca

Codice Code Référence Bestell Nr. Código	Filetto Thread Filet Gewinde Rosca		Dimensioni Dimensions Dimensions Masszahlen Dimensiones				PN Bar
	F1	F2	CH mm	L1 mm	L2 mm	L mm	
AMJ04MG02R	7/16"	1/8"	14	14	8	30.5	345
AMJ04MG04R	7/16"	1/4"	19	14	12	34.5	345
AMJ04MG06R	7/16"	3/8"	22	14	12	36	310
AMJ04MG08R	7/16"	1/2"	27	14	14	39.5	240
AMJ05MG02R	1/2"	1/8"	14	14	8	30.5	345
AMJ05MG04R	1/2"	1/4"	19	14	12	34.5	345
AMJ05MG06R	1/2"	3/8"	22	14	12	36	310
AMJ05MG08R	1/2"	1/2"	27	14	14	40	240
AMJ06MG02R	9/16"	1/8"	17	14.1	8	30.5	345
AMJ06MG04R	9/16"	1/4"	19	14.1	12	34.5	345
AMJ06MG06R	9/16"	3/8"	22	14.1	12	36	310
AMJ06MG08R	9/16"	1/2"	27	14.1	14	40	240
AMJ08MG04R	3/4"	1/4"	22	16.7	12	38	310
AMJ08MG06R	3/4"	3/8"	22	16.7	12	38.5	310
AMJ08MG08R	3/4"	1/2"	27	16.7	14	42.5	240
AMJ08MG12R	3/4"	3/4"	32	16.7	16	46	240
AMJ10MG06R	7/8"	3/8"	24	19.3	12	42.5	240
AMJ10MG08R	7/8"	1/2"	27	19.3	14	45	240
AMJ10MG12R	7/8"	3/4"	32	19.3	16	48.5	240
AMJ10MG16R	7/8"	1"	41	19.3	18	51.9	210

Adattatore diritto Maschio JIC Maschio Gas cilindrico forma E DIN 3852 (2)

Adaptor male JIC - male BSPP form E
Adaptateur mâle JIC - mâle BSPP forme E
Adapter AG-JIC / AG- zöllig form E
Adaptador macho JIC - macho BSPP forma E



F1 - JIC
F2 - BSPP, Gas cylindrique, Zylinder - Gasgewindr,
Gas cilíndrica

Codice Code Référence Bestell Nr. Código	Filetto Thread Filet Gewinde Rosca		Dimensioni Dimensions Dimensions Masszahlen Dimensiones				PN Bar
	F1	F2	CH mm	L1 mm	L2 mm	L mm	
AMJ12MG06R	1".1/16	3/8"	30	21.9	12	46.5	240
AMJ12MG08R	1".1/16	1/2"	30	21.9	14	49	240
AMJ12MG12R	1".1/16	3/4"	32	21.9	16	51	240
AMJ12MG16R	1".1/16	1"	41	21.9	18	54.5	210
AMJ16MG12R	1".5/16	3/4"	36	23.1	16	53.5	210
AMJ16MG16R	1".5/16	1"	41	23.1	18	55.5	210
AMJ16MG20R	1".5/16	1".1/4	50	23.1	20	60	210
AMJ20MG16R	1".5/8	1"	46	24.3	18	59	170
AMJ20MG20R	1".5/8	1".1/4	50	24.3	20	61	170
AMJ20MG24R	1".5/8	1".1/2	55	24.3	22	64	140
AMJ24MG16R	1".7/8	1"	50	27.5	18	62	140
AMJ24MG20R	1".7/8	1".1/4	50	27.5	20	64	140
AMJ24MG24R	1".7/8	1".1/2	55	27.5	22	67	140