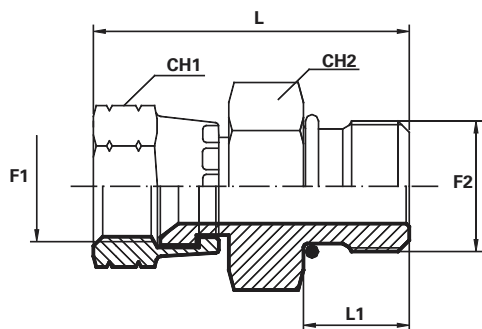


Adattatore diritto Femmina girevole JIC Maschio UNF

Adaptor swivel female JIC - male UNF
Adaptateur femelle tournante JIC - mâle UNF
Adapter IG-JIC drehbar / AG - UNF
Adaptador hembra giratoria JIC - macho UNF



F1 - JIC
F2 - UNF

* Dado spinato
Thrust-wire nut

Codice Code Référence Bestell Nr. Código	Filetto Thread Filet Gewinde Rosca		Dimensioni Dimensions Dimensions Masszahlen Dimensiones				PN Bar
	F1	F2	CH1 mm	CH2 mm	L1 mm	L mm	
AFGJ04MU04	7/16"	7/16"	14	14	9.1	34.5	310
AFGJ04MU05	7/16"	1/2"	17	17	9.1	34.5	275
AFGJ04MU06	7/16"	9/16"	17	19	10	36.5	275
AFGJ05MU05	1/2"	1/2"	17	17	9.1	36	275
AFGJ06MU06	9/16"	9/16"	17	19	10	38.8	275
AFGJ06MU08	9/16"	3/4"	22	19	11.1	40.8	275
AFGJ08MU08	3/4"	3/4"	22	22	11.1	43.1	275
AFGJ08MU10	3/4"	7/8"	27	22	12.7	46.1	210
AFGJ08MU12	3/4"	1".1/16	32	22	15.1	50.1	210
AFGJ10MU08	7/8"	3/4"	22	27	11.1	47.1	210
AFGJ10MU10	7/8"	7/8"	27	27	12.7	50.1	210
AFGJ10MU12	7/8"	1".1/16	32	27	15.1	54.1	210
AFGJ12MU08*	1".1/16	3/4"	27	19	11.1	48.7	210
AFGJ12MU10*	1".1/16	7/8"	27	22	12.7	50.2	210
AFGJ12MU12*	1".1/16	1".1/16	32	32	15.1	54.1	210
AFGJ12MU16*	1".1/16	1".5/16	41	41	15.1	54.7	170
AFGJ16MU12*	1".5/16	1".1/16	32	32	15.1	57.9	170
AFGJ16MU16*	1".5/16	1".5/16	41	41	15.1	54.7	170
AFGJ16MU20*	1".5/16	1".5/8	50	50	15.1	60.4	140
AFGJ20MU20*	1".5/8	1".5/8	50	50	15.1	60.8	140
AFGJ24MU24*	1".7/8	1".7/8	55	60	15.1	69.8	105